

# Elevate SMART Manikin

Scalable, Self-Directed Training for Lifesaving Skills

The Elevate SMART Manikin offers an efficient, hands-on solution for CPR, AED, and First Aid training, providing real-time feedback and skills assessment. In collaboration with the American Red Cross, this manikin allows you to complete certification for various lifesaving courses, including Basic Life Support (BLS), at your own pace.



## KEY FEATURES



**Self-Directed Certification**



**Real-Time Feedback**



**Adult & Infant Versions**

## WHO CAN BENEFIT FROM ELEVATE SMART MANIKIN



### Healthcare Providers

Supports ongoing BLS and CPR certification, as well as skill retention, ensuring providers and clinical staff remain prepared for high-stakes patient care situations.



### First Responders

Train responders in CPR, AED, choking, and bleeding control with real-time feedback, building confidence for high-pressure emergencies.



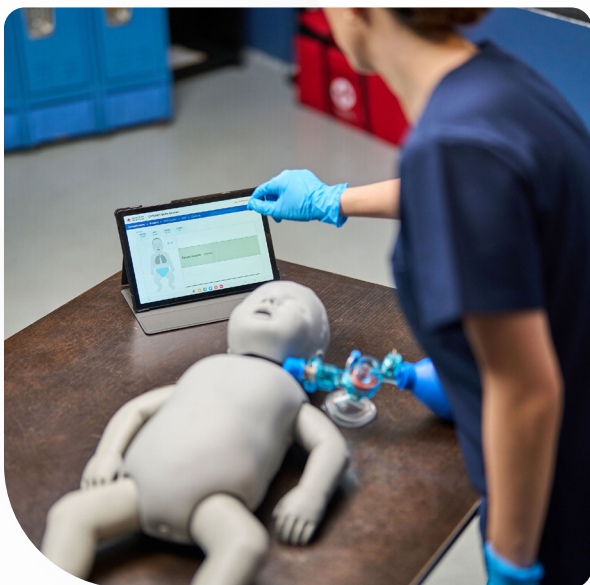
### Workplace Organizations

Expand lifesaving training across your organization, ensuring employees maintain certification, readiness, and the confidence to act in critical situations.



### Training Centers

Provides a scalable training solution that enables learners to complete hands-on skills assessments at their own pace, with real-time visual and audio guidance.



## WHY CHOOSE THE ELEVATE SMART MANIKIN

- 1 **Hands-On Training with Real-Time Assessment**  
Provides objective feedback for metrics like chest compression depth, ventilation volume, AED usage, and more.
- 2 **Tech-Enabled Learning**  
Bluetooth connection facilitates easy tracking of performance and skills development through the app.
- 3 **Flexible Certification Process**  
Complete online coursework and perform the skills assessment with the Elevate SMART Manikin to earn certification at your convenience.
- 4 **Total Cost of Ownership Advantage**  
A long-term, cost-effective solution that offers a flexible and scalable alternative to instructor-led training while reducing training costs and logistical challenges.

### Manikin

**Adult Size:** 27" L x 13" W x 8" H (68 cm x 33 cm x 20 cm)

**Infant Size:** 28" L to foot (22" to groin) x 15" W (elbow to elbow) x 6" H (lying on back) (71 cm x 38 cm x 15 cm)

**Adult Weight:** 9.9 lbs. (4.5 kg)

**Infant Weight:** 9.3 lbs. (4/2 kg)

**Carrying Case:** (manikins are carried on their sides) 29" L x 10" W x 15" H (74 cm x 38 cm x 25 cm) 1.5 kg (total package: 6.5 kg)

### Electrical

**AC Input:** AC 115-230VAC, 50/60Hz

**Internal Batteries:** 6 x C for Adult; 6 x AA for infant (batteries not included)

**Runtime:** Approximately 4 hours

Android OS 8.0 Oreo or better recommended

IOS version coming soon

### Standard Equipment

Power cord for AC use

Replaceable lung bag

Race-agnostic, button-on, skin without breast tissue and face skin

AED magnetic sheets (pads are optional, not included)

Software that integrates with manikin

American Red Cross-branded carrying case that unfolds to a padded cushion for kneeling

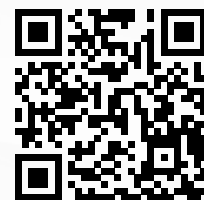
Two years of Elevate Healthcare Express Assurance warranty plan

### Optional Equipment

Race-agnostic, button-on skin with breast tissue

Samsung Galaxy Tab A9 or A9+ for a slightly larger screen is strongly recommended

NOTE: Computer and laptop options are not currently available



Scan the QR code for more information about Elevate SMART Manikin.